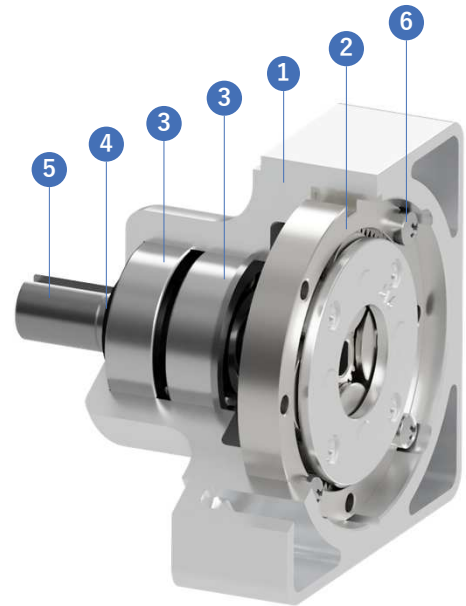


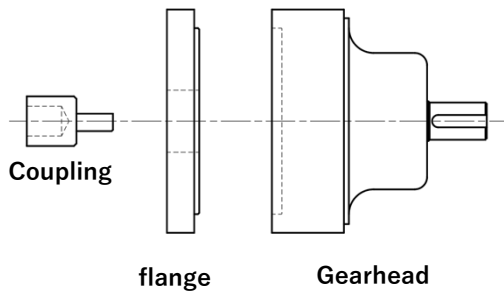
■ STRUCTURE of GEARHEAD

- 1 Gear Case
- 2 Planetary Gear Unit
- 3 Ball Bearing
- 4 Oil Sealing
- 5 Output Shaft
- 6 Fixing Screw



■ SETTING TO USE

Please prepare a flange and a coupling to connect to a motor by yourself.



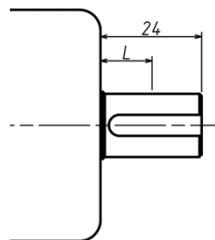
■ LIFE OF OUTPUT SHAFT BEARING

Please confirm the life of the output shaft bearing in the procedure below, in case radial load is applied to the output shaft of the gearhead.

$$\text{Equivalent Dynamic Load (N)} \quad P = F_r \cdot \frac{25.5 + L}{15}$$

$$\text{BEARING LIFE (h)} \quad L_{10h} = \frac{10^6}{60 \cdot N} \left(\frac{9600}{C_f \cdot F_s \cdot P} \right)^3$$

- P : Equivalent Dynamic Load(N)
- F_r : Equivalent Radial Load(N)
- L : Radial Load Position(mm)
- N : Output Revolution(rpm)
- C_f : Drive Coefficient
- F_s : Impact Coefficient



Radial Load Position : L

Impact Coefficient F_s

Level of Impact	F_s
almost Zero	1.0
slight Impact	1.0~1.2
with Hard Impact	1.4~1.6

Drive Coefficient C_f

Connection	C_f
Chain	1.00
Gear	1.25
Belt	1.50

■ LUBRICATION

Grease is injected at manufacturing.

■ MODEL NAMING RULE

LGH

Gearhead Type

75

Gear Outer Diameter

- 125

Nominal Speed Ratio

SSM8

Material · Width of Gear

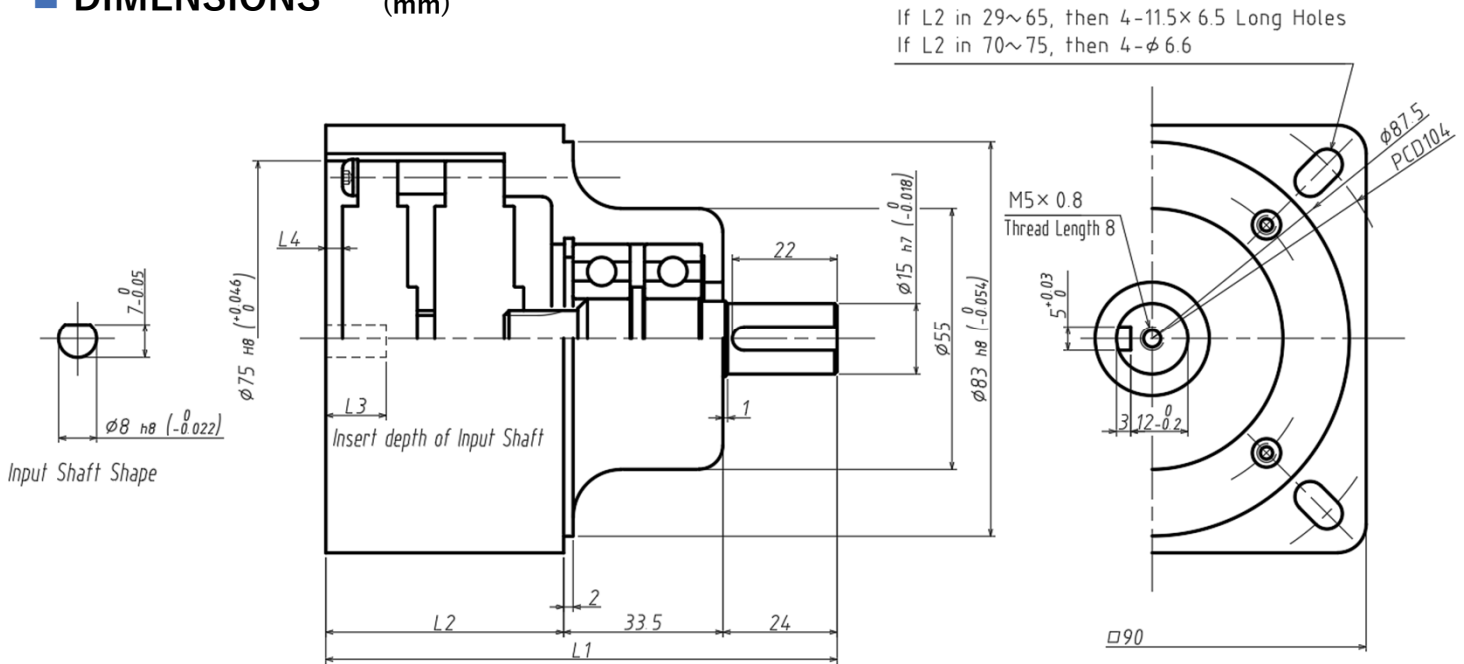
A

Input Shape

15

Diameter of Output Shaft

■ DIMENSIONS (mm)



* Nominal Speed Ratio will be described in □ .

Model Name	Nominal Speed Ratio	Actual Speed Ratio	Maximum Output Torque(Nm)	Dimension Mark				Weight (kg)
				L1	L2	L3	L4	
LGH75-□PA15	3 4 5	3.1 3.7 4.8	1.8	86.5	29	14.1	2.6	0.73
LGH75-□SA15			6.4					
LGH75-□MA15			5.9					
LGH75-□PPA15	9 12 15 20 25	9.7 11.6 14.9 17.8 23	2.9	107.5	50	14.7	3.2	1.12
LGH75-□PSA15			8.8					1.22
LGH75-□SSA15			9.8					1.32
LGH75-□SMA15	9 12 16 20 25	9.3 11.1 14.9 19.2 24	16.7	116.5	59	21.7	10.2	1.36
LGH75-□SM8A15			27.5					1.51
LGH75-□PPPA15			3.9					127.5
LGH75-□PPSA15	10.8	1.53						
LGH75-□PSSA15	12.3	1.64						
LGH75-□SSMA15	27 36 45 48 60 64 75 80 100 125	29 34.7 44.8 41.4 53.5 55.2 69.1 71.3 92.2 115.2	22.6	132.5	75	17.3	5.8	1.78
LGH75-□SSM8A15			39.2					2.04