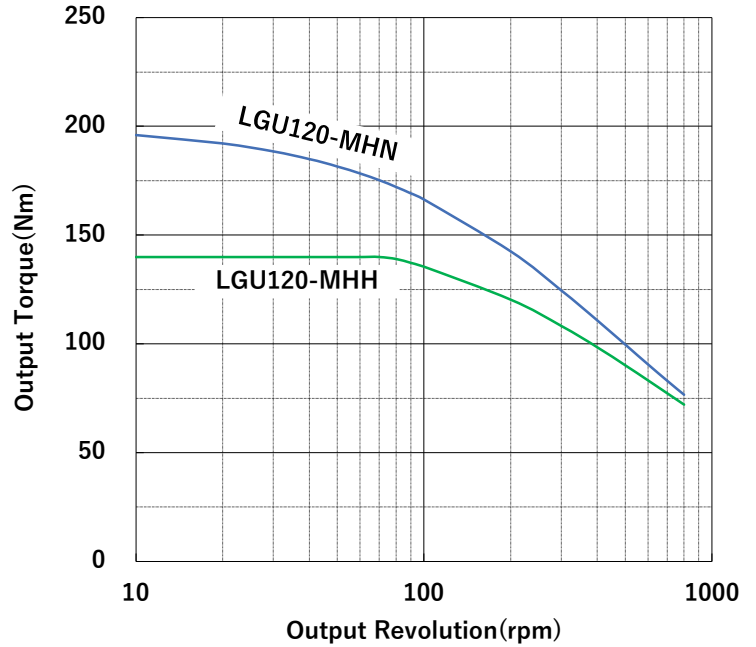
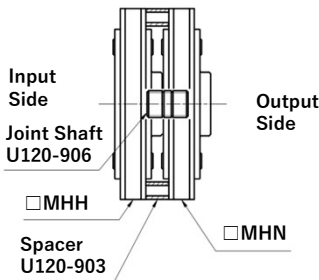




■ OUTPUT TORQUE CURVE



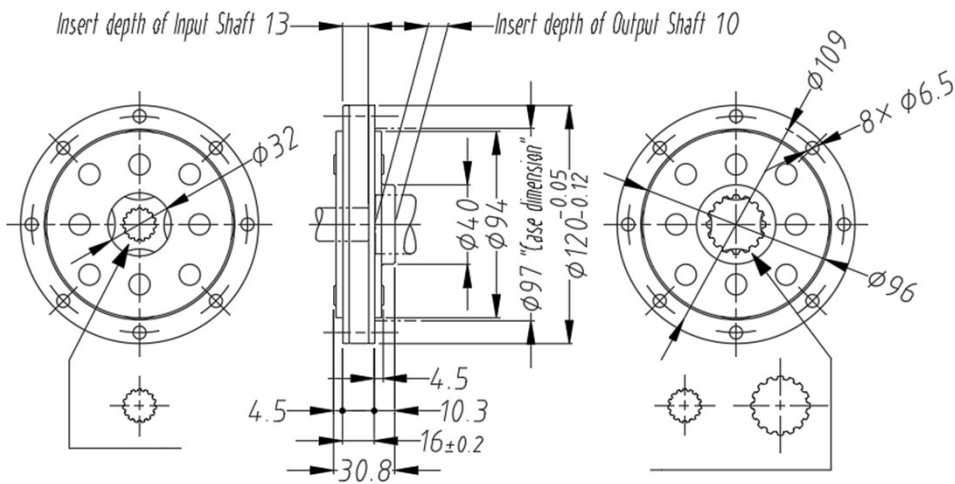
■ EXAMPLE of STACKING



- See the Multi-Stage Usage Page
- See the Optional Parts Page

■ DIMENSIONS (mm)

LGU120-MHH, MHN

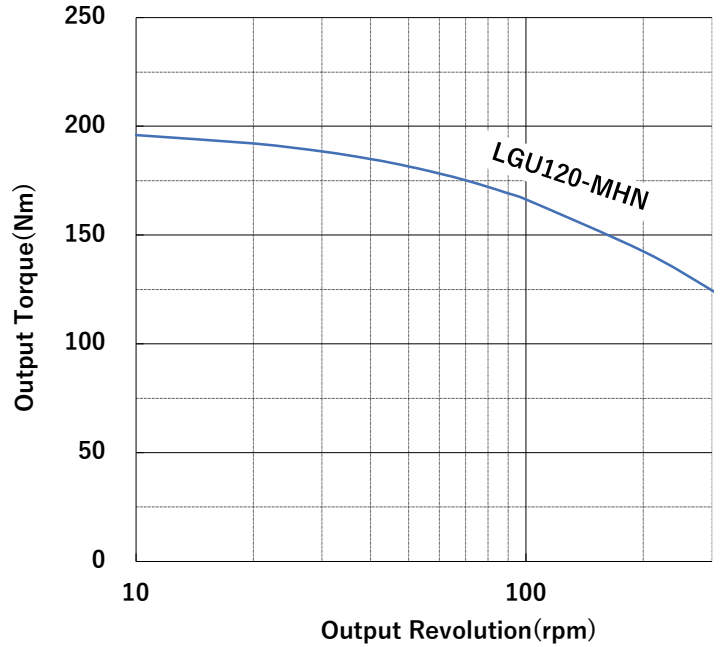


Series	Model Name	Actual Speed Ratio	Maximum Output Torque(Nm)	Input Shape	Output Shape	Weight (kg)
LGU120-M	LGU120-3MHH	3	137	Spline Hole 17×15×1	Spline Hole 17×15×1	1.3
	LGU120-4MHH	4				1.3
	LGU120-5MHH	5				1.4
	LGU120-3MHN	3	196		Spline Hole 30×16×1.667	1.2
	LGU120-4MHN	4				1.3
	LGU120-5MHN	5				1.4



※The units will not be stacked at shipment.

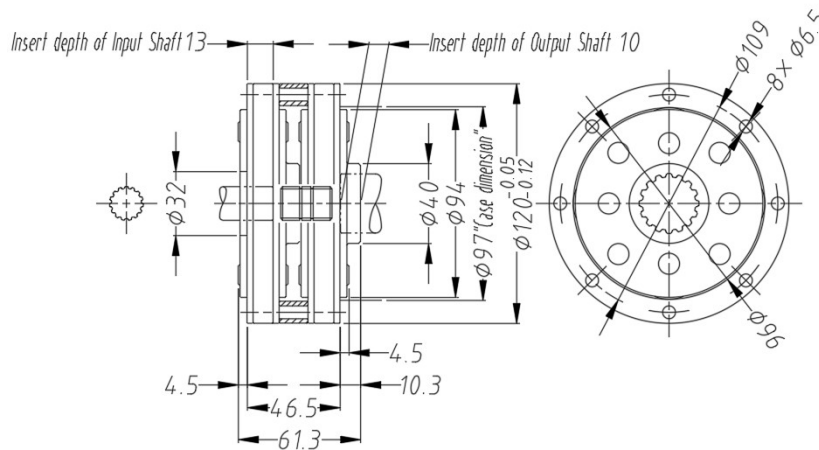
■ OUTPUT TORQUE CURVE



※The torque curve of the final stage (output side) is described.

■ DIMENSIONS (STACKED)

2 Stages



Actual Speed Ratio	1st Stage Model Name	2nd Stage Model Name	Spacer (Option)	Joint Shaft (Option)	Maximum Output Torque(Nm)	Input Shape	Output Shape
9	LGU120-3MHH	LGU120-3MHN	U120-903×1	U120-906×1	196	Spline Hole 17×15×1	Spline Hole 30×16×1.667
12	LGU120-4MHH	LGU120-3MHN					
16	LGU120-4MHH	LGU120-4MHN					
20	LGU120-5MHH	LGU120-4MHN					
25	LGU120-5MHH	LGU120-5MHN					

※To fix the joint shaft on the axial direction, 2pcs of C-rings(JIS B 2804)STW-16 would be required. Please note that these are NOT included in the optional part.