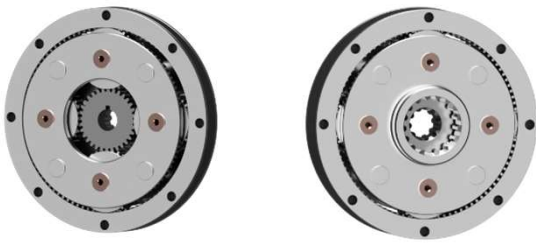


LGU146-M Series

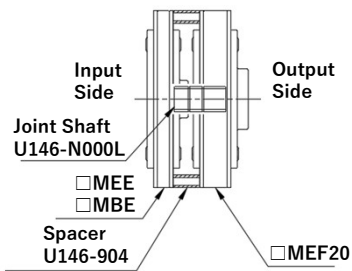
UNIT TYPE

φ146

196 - 343 Nm

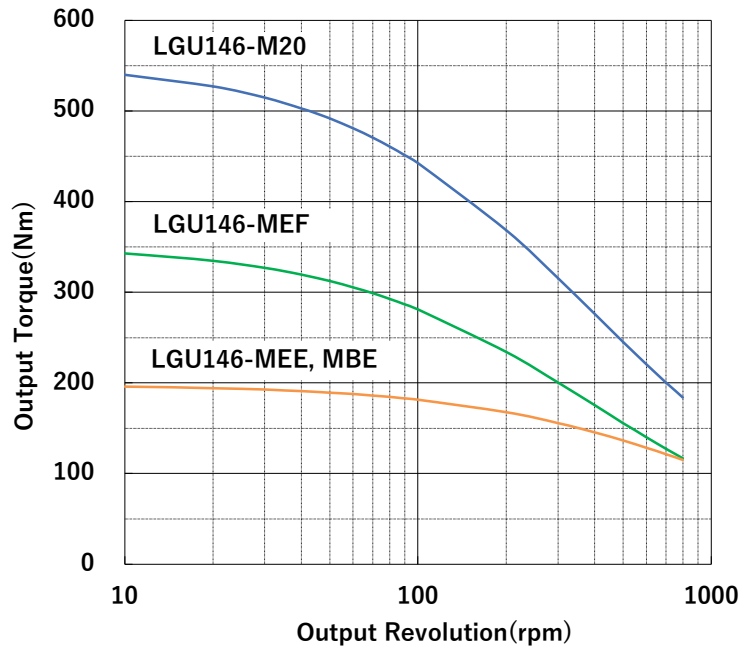


EXAMPLE of STACKING



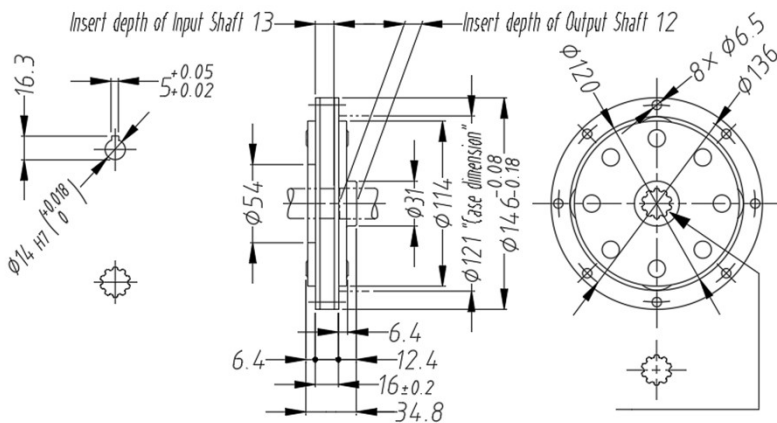
- See the Multi-Stage Usage Page
- See the Optional Parts Page

OUTPUT TORQUE CURVE

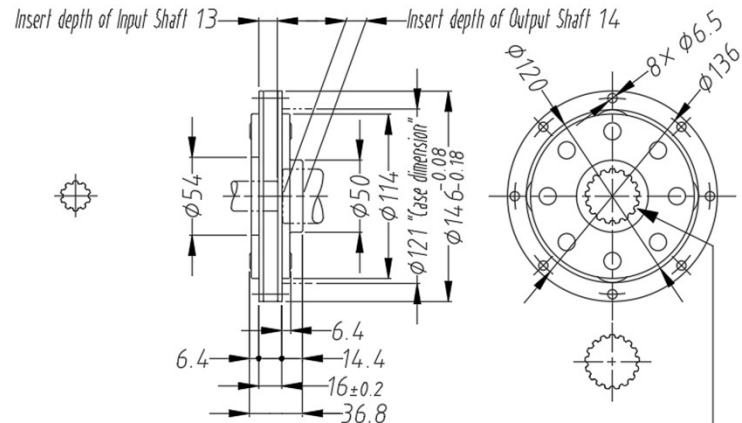


DIMENSIONS (mm)

LGU146-MBE, MEE



LGU146-MEF

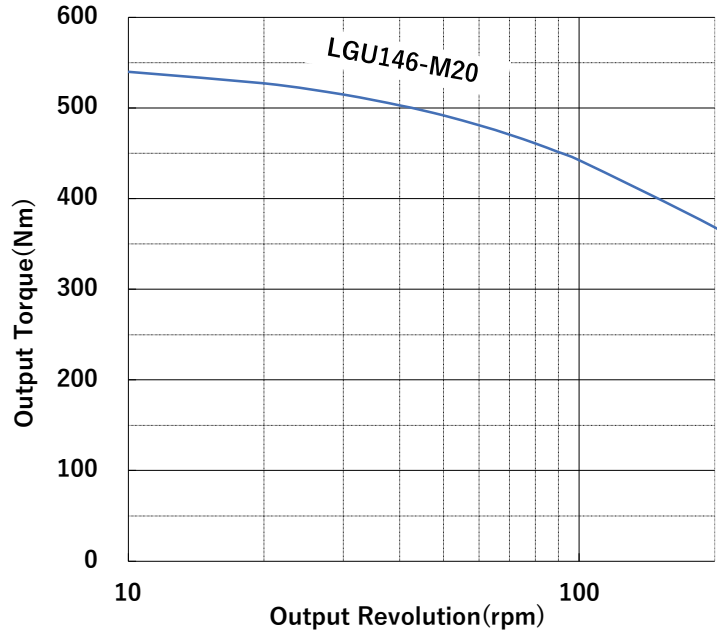


Series	Model Name	Actual Speed Ratio	Maximum Output Torque(Nm)	Input Shape	Output Shape	Weight (kg)
LGU146-M	LGU146-3MBE	3	196	Hole with Key φ14-5×16.3	Spline Hole 21×10×1.75	2.0
	LGU146-4MBE	4				2.1
	LGU146-5MBE	5				2.2
	LGU146-3MEE	3				2.0
	LGU146-4MEE	4				2.1
	LGU146-5MEE	5				2.2
	LGU146-3MEF	3	343	Spline Hole 21×10×1.75	Spline Hole 38×17×2	2.0
	LGU146-4MEF	4				2.2
	LGU146-5MEF	5				2.2



※The units will not be stacked at shipment.

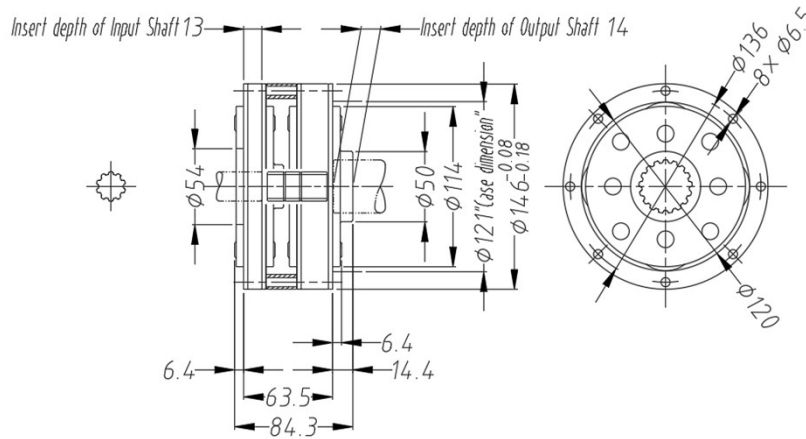
■ OUTPUT TORQUE CURVE



■ DIMENSIONS (STACKED)

※The torque curve of the final stage (output side) is described.

2 Stages



Actual Speed Ratio	1st Stage Model Name	2nd Stage Model Name	Spacer (Option)	Joint Shaft (Option)	Maximum Output Torque(Nm)	Input Shape	Output Shape
9	LGU146-3MEE	LGU146-3MEF20			540	Spline Hole 21×10×1.75	Spline Hole 38×17×2
12	LGU146-4MEE	LGU146-3MEF20					
16	LGU146-4MEE	LGU146-4MEF20	U146-904×1	U146-N000L×1			
20	LGU146-5MEE	LGU146-4MEF20					
25	LGU146-5MEE	LGU146-5MEF20					

※To fix the joint shaft on the axial direction, 2pcs of C-rings(JIS B 2804)STW-16 would be required. Please note that these are NOT included in the optional part.