

LGU54-P, C Series

UNIT TYPE

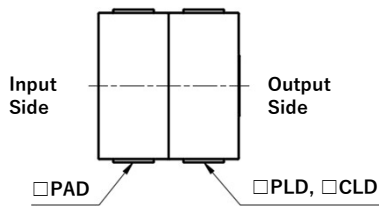
φ54

2.9 - 9.8 Nm

Made-to-Order on Lot

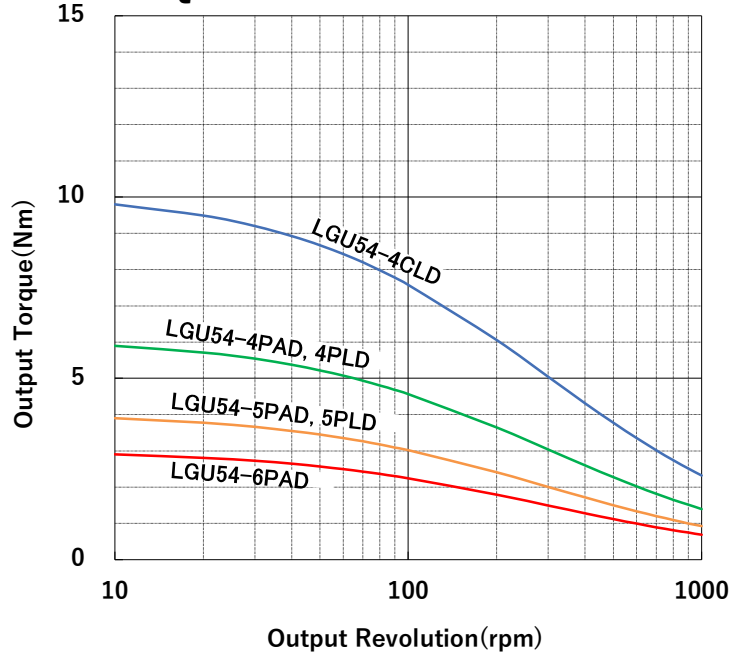


EXAMPLE of STACKING



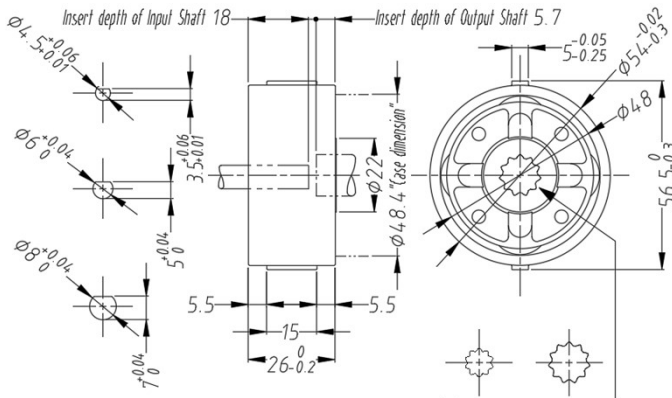
➤ See the Multi-Stage Usage Page

OUTPUT TORQUE CURVE

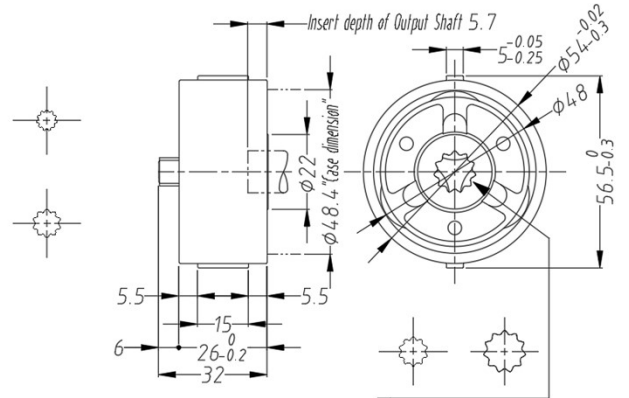


DIMENSIONS (mm)

LGU54-PAD



LGU54-PLD, CLD

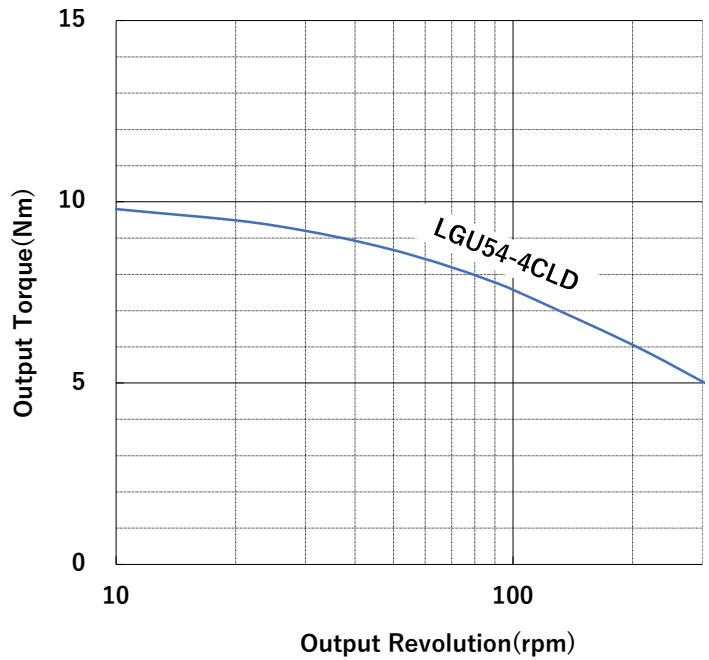


Series	Model Name	Actual Speed Ratio	Maximum Output Torque(Nm)	Input Shape	Output Shape	Weight (g)
LGU54-P	LGU54-4PAD	4	5.9	D Cut Hole φ8×7	Serration Hole 12×11×1	100
	LGU54-5PAD	5	3.9	D Cut Hole φ6×5	Serration Hole 8.25×10×0.75	100
	LGU54-6PAD	6	2.9	D Cut Hole φ4.5×3.5	Serration Hole 12×11×1	110
	LGU54-4PLD	4	5.9	Serration Shaft 12×11×1	Serration Hole 12×11×1	110
	LGU54-5PLD	5	3.9	Serration Shaft 8.25×10×0.75	Serration Hole 8.25×10×0.75	110
LGU54-C	LGU54-4CLD	4	9.8	Serration Shaft 12×11×1	Serration Hole 12×11×1	130



※The units are not stacked at shipment.

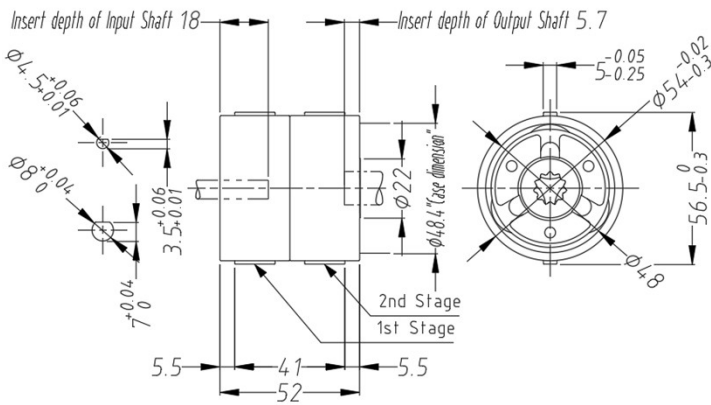
■ OUTPUT TORQUE CURVE



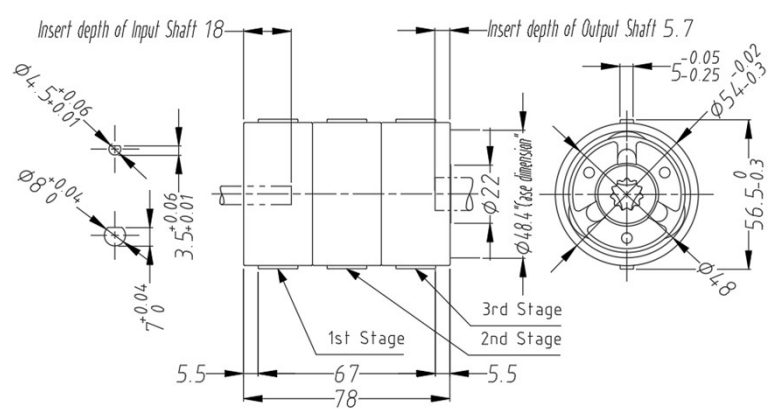
※The torque curve of the final stage (output side) is described.

■ DIMENSIONS (STACKED) (mm)

2 STAGES



3 STAGES



Actual Speed Ratio	1st Stage Model Name	2nd Stage Model Name	3rd Stage Model Name	Maximum Output Torque(Nm)	Input Shape	Output Shape
16	LGU54-4PAD	LGU54-4CLD	-	9.8	D Cut Hole $\phi 8 \times 7$	Serration Hole $12 \times 11 \times 1$
24	LGU54-6PAD					
64	LGU54-4PAD	LGU54-4PLD	LGU54-4CLD		D Cut Hole $\phi 8 \times 7$	
96	LGU54-6PAD				D Cut Hole $\phi 4.5 \times 3.5$	