

LGU75-M Series

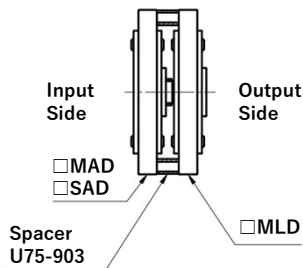
UNIT TYPE

φ75

6.9 - 22.6 Nm

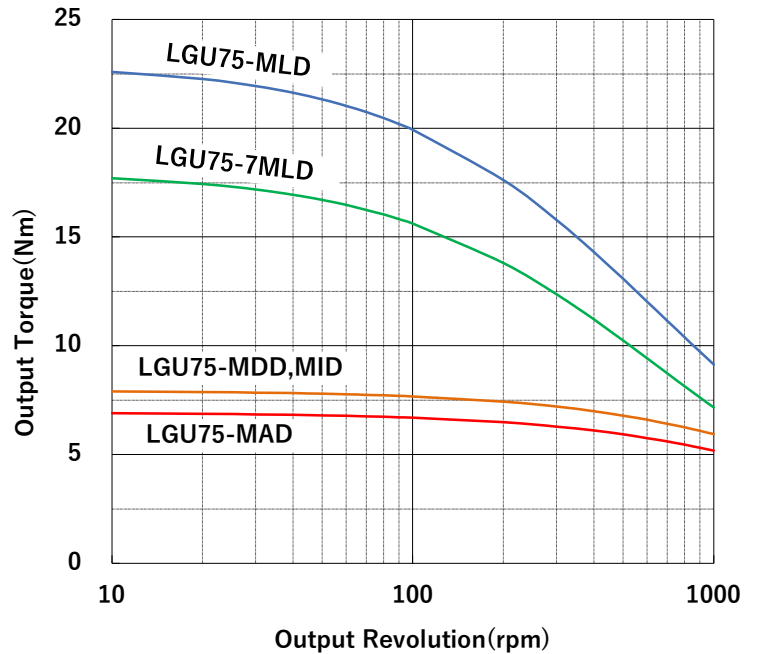


EXAMPLE of STACKING



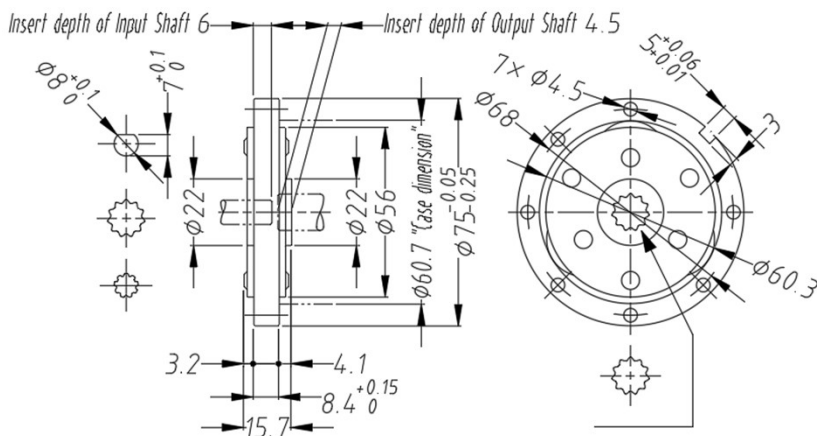
- See the Multi-Stage Usage Page
- See the Optional Parts Page

OUTPUT TORQUE CURVE

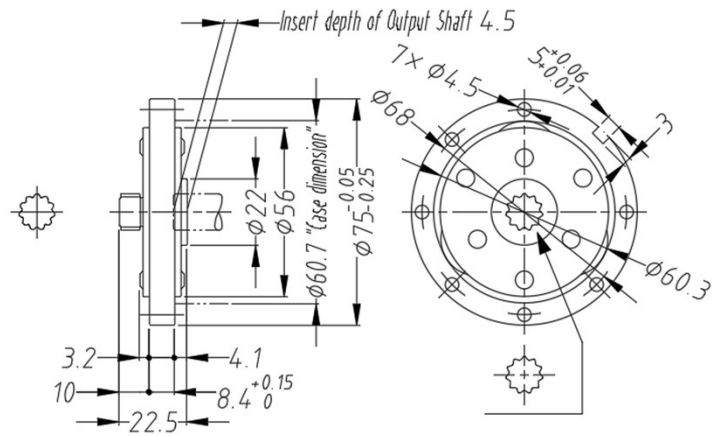


DIMENSIONS (mm)

LGU75-MAD, MDD, MID



LGU75-MLD



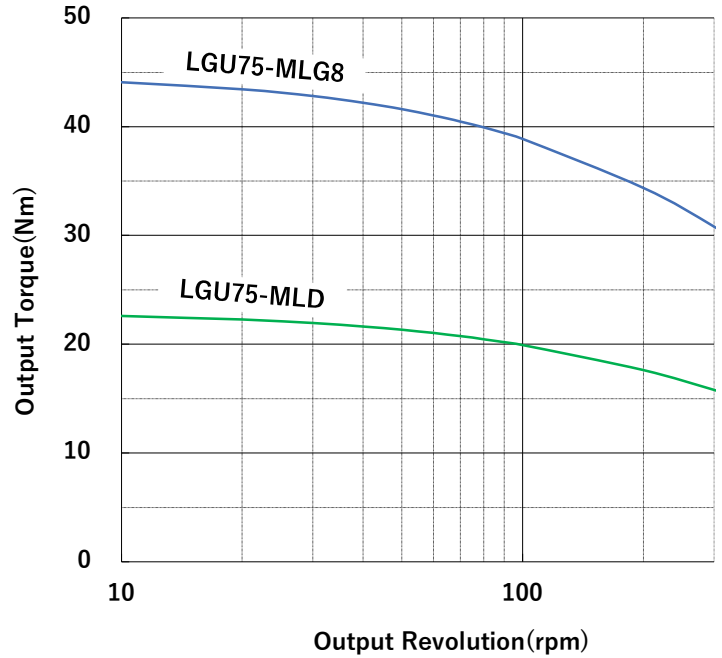
Series	Model Name	Actual Speed Ratio	Maximum Output Torque(Nm)	Input Shape	Output Shape	Weight (g)
LGU75-M	LGU75-3MAD	3	6.9	D Cut Hole φ8×7	Serration Hole 12×11×1	230
	LGU75-4MAD	4				240
	LGU75-5MAD	5				250
	LGU75-3MDD	3	7.9	Spline Hole 8×9×0.75		230
	LGU75-4MDD	4				240
	LGU75-5MID	5				250
	LGU75-3MLD	3	22.6	Serration Shaft 12×11×1		240
	LGU75-4MLD	4				250
	LGU75-5MLD	5				260
	LGU75-6MLD	5.8				260
	LGU75-7MLD	7	17.7			270

**LGU75 Multi-Stage UNIT TYPE COMBINATION  $\phi 75$  22.6 – 44.1 Nm**



※The units will not be stacked at shipment.

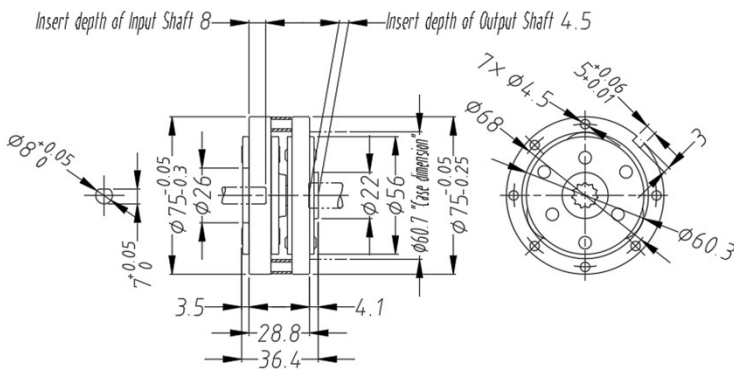
**OUTPUT TORQUE CURVE**



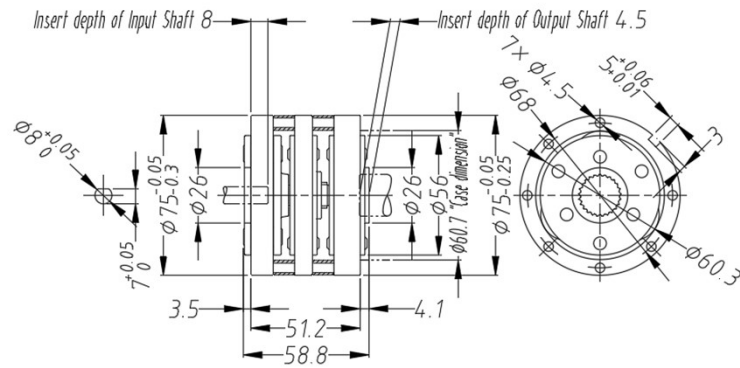
※The torque curve of the final stage (output side) is described.

**DIMENSIONS (STACKED) (mm)**

**2 STAGES**



**3 STAGES**



Actual Speed Ratio	1st Stage Model Name	2nd Stage Model Name	3rd Stage Model Name	Spacer (Option)	Maximum Output Torque(Nm)	Input Shape	Output Shape
9.33	LGU75-3SAD	LGU75-3MLD					
12.44	LGU75-3SAD	LGU75-4MLD					
14.86	LGU75-4SAD	LGU75-4MLD	-	U75-903×1	22.6		Serration Hole 12×11×1
18.57	LGU75-4SAD	LGU75-5MLD					
24	LGU75-5SAD	LGU75-5MLD					
44.57	LGU75-4SAD	LGU75-4MLD	LGU75-3MLG8				
59.42	LGU75-4SAD	LGU75-4MLD	LGU75-4MLG8				
74.28	LGU75-4SAD	LGU75-5MLD	LGU75-4MLG8	U75-903×2	44.1	D Cut Hole $\phi 8 \times 7$	
96	LGU75-5SAD	LGU75-5MLD	LGU75-4MLG8				
120	LGU75-5SAD	LGU75-5MLD	LGU75-5MLG8				Serration Hole 19.5×25×0.75