

EASYCLAMP	SS Type	S Type	M Type	MA Type	MB Type
1 set include ... 1.Body, 2.Block, 3.Link 4.Clamping Washer, 5.Waher	set(s)	set(s)	set(s)	set(s)	set(s)
Bolt Size *This is option.	M10×70	M12×80	M16×90	M16×90	M16×90
	pc.	pc.	pc.	pc.	pc.

EASYCLAMP	L Type	L Special Type	LA Type	LA Special Type	EL Type
1 set include ... 1.Body, 2.Block, 3.Link 4. Clamping Washer, 5. Washer	set(s)	set(s)	set(s)	set(s)	set(s)
Bolt Size *This is option.	M20×120	M24×120	M20×130	M24×130	M24×120
	pc.	pc.	pc.	pc.	pc.

EASYCLAMP	EL Special Type
1 set include ... 1.Body, 2.Block, 3.Link 4. Clamping Washer, 5. Washer	set(s)
Bolt Size *This is option.	M24×130
	pc.

Company Information					Date :	
Company Name				Contact Person		
Company Address	Country :	City :	Address :			
	Zip Code :	E-mail		TEL :	FAX :	

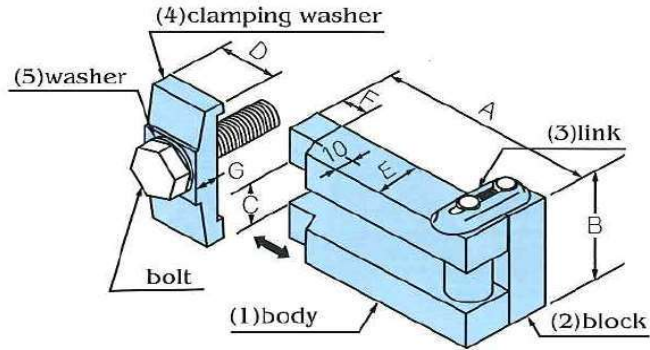
Sending Address (if you have deferent place to send)						
Company Name				Contact Person		
Company Address	Country :	City :	Address :			
	Zip Code :	E-mail		TEL :	FAX :	

*We do not sell only Bolt, Clamping Washer, and Washer.

*Please fill up blank and send us by e-mail to ... info@matex-japan.com

*These prices will be applied with EXW trade term and 100%T/T in advance payment.

Matex Co., Ltd
1-125, Mizukoshi, Yao City, Osaka, Japan, 581-0856
TEL: +81-72-941-8652 / FAX: +81-72-941-8820 / E-mail : info@matex-japan.com



Important Notes

- *1 set "EASYCLAMP" includes 8 pcs.
- *Bolt is an option.
- *We do not sell only Bolt, Clamping Washer, and Washer.
- *Trade Term : EXW
- *Payment Term : 100% T/T in advance
- *All bank charge is paid by buyer.
- *All freight charge is paid by buyer.

Size (mm) \ Type	SS	S	M	MA	MB	L	L Special	LA	LA Special	EL	EL Special
A	80	80	100	120	150	150	150	150	150	200	200
B	28.5	30.5	46.5	46.5	46.5	61	65	61	65	69	69
C	10.5	12.5	16.5	16.5	16.5	21	25	21	25	25	25
D	20	22	30	30	30	39	44	39	44	44	44
E	25	25	25	25	25	30	30	30	30	32	32
F	15	15	15	15	15	15	15	15	15	15	15
G	6	6	10.5	10.5	10.5	13	16	13	16	16	16
Block Height	10 × 15	20 × 25	20 × 25	20 × 25	20 × 25	30 × 35	30 × 35	40 × 45	40 × 45	30 × 35	40 × 45
Appropriate Metal Mold Thickness	10 15	20 25	20 25	20 25	20 25	30 35	30 35	40 45	40 45	30 35	40 45
	20 25	30 35	30 35	30 35	30 35	40 45	40 45	50 55	50 55	40 45	50 55
Appropriate Bolt Size	M10×70	M12×80	M16×90	M16×90	M16×90	M20×120	M24×120	M20×130	M24×130	M24×120	M24×130
Quantity of 1 set	8 pcs	8 pcs	8 pcs	8 pcs	8 pcs	8 pcs	8 pcs	8 pcs	8 pcs	8 pcs	8 pcs
1 set Weight (8 pcs EASYCLAMP)	3.4 kg	4.0 kg	7.6 kg	8.6 kg	10.0 kg	18.0 kg	19.6 kg	20.0 kg	22.8 kg	26.5 kg	29.8 kg
8 pcs Bolts Weight	0.5 kg	0.7 kg	1.4 kg	1.4 kg	1.4 kg	2.8 kg	4.1 kg	3.0 kg	4.4 kg	4.1 kg	4.4 kg