



# Matex

**We Discover Tomorrow**

## Company Profile



### Matex Planetary Drive International, Inc.



Rev. 08 4-19-2016

COMPANY NAME : **Matex Planetary Drive International, Inc.**  
 LOCATION : No. 16 Mountain Drive LISP II  
 Brgy. La Mesa Calamba City, Laguna  
 TEL. NO. : (049) 545-6805, 545-6806, 545-7752  
 E-mail Address : matsukawa@matex-japan.com  
 FAX NO. : (049) 545-6809  
 SEC Registration : June 2, 2004 Reg. No. CS200408386  
 PEZA Registration : July 12, 2004 Reg. No. 04-50  
 TIN NO. : 232-335-340-000  
 SSS NO. : 04-1007504-9



**EXECUTIVE OFFICERS:**

**PRESIDENT** : **TOSHIAKI MATOBA**  
 (President, Matex Co., Ltd.)  
**VP/GENERAL MANAGER** : **NORIO OSHIMA**  
**EMAIL ADDRESS** : oshima@matex-japan.com  
**QC/QA MANAGER** : **NAOKI MATSUKAWA**  
**EMAIL ADDRESS** : matsukawa@matex-japan.com  
**LAND AREA** : 7,901.92m<sup>2</sup>  
**FACTORY AREA** : 4,682.84m<sup>2</sup>  
**PRODUCTS CAPABILITY** : A. Manufacture of high precision engineered plastic injection parts and assemblies.  
 B. Mold-Making; Parts-Making thru CNC Machines and Mold Repair/ Maintenance.  
 C. Manufacture of Metal Parts/ Assembly.

**HEAD OFFICE** : **Matex Co., Ltd.**  
**ADDRESS** : 125 Mizukoshi I-chome, Yao City Osaka, Japan  
**TEL. NO.** : (072) 941-8652  
**FAX NO.** : (072) 941-8820  
**WEBSITE:** : www.matex-japan.com



**Matex**x



Matex Planetary Drive International, Inc.  
Philippines



Matex Japan



Wuxi Matex Precision Co., Ltd.  
China

## Management Philosophy of The Group

### Entrepreneurial Spirit

A Step Towards Infinity

It is our spirit to move forward step by step towards infinite future. No fixed goal has been there.

The perpetual motion itself pursuing the eternal high is the very success of life and business.

### The Triple Creation Philosophies

Under this spirit, as the independent and proudful manufacturer, we declare philosophies that:

- Matex creates things which do not exist in the present world.
- Matex produce things which contribute to improve our country's civilization.
- Matex makes things which delight ourselves and realize people's dreams.

### Quality Philosophy

Always from the customers' point of view, give priority to the quality of products and services and every member of the group all over the globe, together with the company, shall improve the quality of heart and skills towards business, please customers and win their trust.

## Quality Policy

Take initiative and realize customers' satisfaction. Self-satisfied QCD settings do not mean professional work. We can realize a business when we anticipate customer's needs.

Act based on the principle of Triple Spot Realism, run to the actual spot, look the actual articles and accept the fact, in all processes and for all kinds of work.

Turn the cycle of PDCA speedily on all occasions and improve the efficiency of QMS systematically.

Analyze the reason of failure thoroughly and make rules as well as system learned from the failure, to prevent the same problem again.

Customer's claims and opinions lead to new products and services. Listen carefully and consider positively.

Comply the prevailing rules, regulations and ISO requirements. Report without hesitation a negative information so that the whole company can share that information.

Form a good corporate culture that ordinary things should not be neglected and educate the next generation together.



## Matex History

1921	Matoba Shokai Company founded by the founder, Jinjiro Matoba. Production of celluloid bicycle frame pumps started
1926	Production system for frame pumps revised for exclusive export around the world.
1937	Sales of steel balls started.
1948	Company trademark registered as "Matex".
1950	Company status upgraded to limited company.
1955	Plastic injection molding machines installed, Production and sales of commercial precision parts and household goods made of nylon resin started from then on till the present date, all kinds of heatable and malleable resins handled.
1972	R&D into planetary gear module systems started. From then on, various industrial patents acquired.
1973	Company renamed "Matex" Yao Plant opened.
1976	Sales of planetary gear module systems started.
1983	Tokyo Office opened.
1990	Matex built an additional reinforced two-story warehouse with fireproof cabinets for molds with a storage capacity of 1,000 molds in the site of Yao factory.
1997	Matex Philippines was established.
2001	80th anniversary of company's founding.
2004	Philippines No.3 Plant completed Precision Part Development Dept. initiated.
2005	Wuxi Matex Precision Co., Ltd. started in Jiangsu Province as No.2 overseas production base.
2010	Matex Philippines expanded its Production through addition of machineries.



ISO Certified

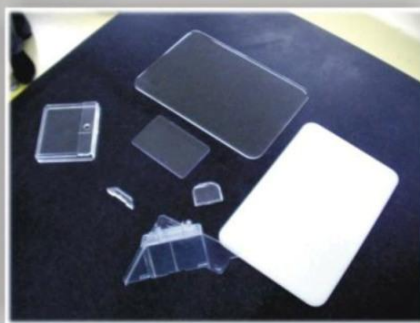
# Injection Department



*Matex is a professional manufacturer handling planetary gear module systems, gear increasing/reducing systems, transmissions, and micro-processed parts, precision die production, and precision injection molding technology. Matex has an impressive track record in commissioned development and production matched to customers' specifications in the areas of home electric appliances, machinery, automobile parts, and health equipment.*



# Injection Clean Room



*Design and production of Epicyclic module, Speed-up and Reduction gear, Transmission, Gear box.*

- \* Design and development for customer specifications.*
- \* We have a lot of good reputations for design and mass-product based on customer request, in the field of electronics industry, machine, automodom, etc..*
- \* Top on the volume with customer specifications.*

*Design and production of Mechanism / Actuator, Power unit, Pump etc., for electrical appliance and healthcare instrument etc..*

- \* Available new function products in cooperation your planning with our mechanism technology.*

# Assembly Department



*If you need to develop and produce mechanical mechanisms, such as actuators, power units and pumps, leave this up to Matex. We can provide total solutions for your company's needs - for precision die production thru to precision plastic injection molding and assembly - through the combined resources of our Headquarters as our development and engineering center and our overseas plants.*

# Stamping Area

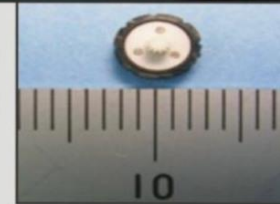


# QA/QC Department



*We have also been selected as a corporate member of the Kansai Next-generation Robot Promotion Council sponsored by the Kansai Economic Federation, and are currently engaged in applications for robotics technology using our new high-tech equipment for measuring precision plastic products.*

*It is also the leading manufacturer of planetary gear module systems in terms of number of manufactured unit.*



# Mold & Die Department



FORMING GRINDING MACHINE (OKAMOTO MM 450II)



PRECISION SURFACE GRINDER (OKUMA & HOWA STMZR)



LATHE MACHINE (HOWA STRONG 860)



WIRE CUT MACHINE (MITSUBISHI FA10S)



ELECTRIC DISCHARGE MACHINE (MITSUBISHI EA12V)



Shizuoka NC Milling



WIRE CUT MACHINE (SODICK AP200L)



ELECTRIC DISCHARGE MACHINE (SODICK AQ35L)



Machining Center (Makino V33)



SURFACE GRINDER (OKAMOTO PSG63DK)



CYLINDRICAL GRINDER (OKAMOTO OGM330)



Radial Machine Tominaca Tre-1000A



# Mold & Die Department



SURFACE GRINDER (OKAMOTO PSG63DK)



Robo Drill Machine (FANUC)



MILLING MACHINE (OKUMA & HOWA)



Mold Storage Area



Mold Drawing Room



Mold Storage Area

*Matex is able to handle almost all the materials and components in reference to production of dies by the accumulation of know-how on mold production of sinters and die-castings as well as plastic precision dies and cutting off of mandrel for forged gears.*

*Matex installs state-of-the-art machinery and equipment complying with customers' needs.*

# Mold & Die Department



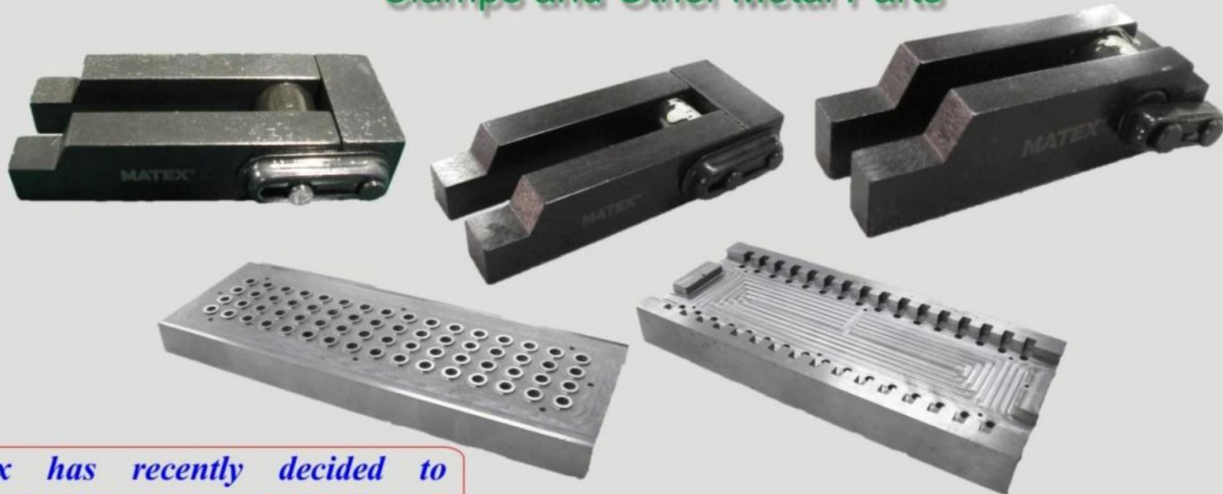
## MOLD FABRICATION



## MOLD ASSEMBLY



## Clamps and Other Metal Parts



*Matex has recently decided to expand sales agents or distributors and representatives in each of major countries in order to cultivate new markets for our products and to expand the number of our customers.*

*We will support you in wide range of metal processing fields from Reliable technique both domestically and internationally.*

### A. QUALITY CONTROL

NO.	DESCRIPTION	QTY
1	CNC Three Dimensional Measuring Machine (CMM)	2
2	Toolmakers Microscope (TMS)	2
3	Profile Projector	2
4	Gear Tester (OSAKA GTR-4; GTR-4LS)	2
5	Eccentric Inspection Tester	1
6	Push Pull Gauge (PSH-2000N)	1
7	Push Pull Test (10kg-100g) (AEF-10)	1
8	Weight / Count Scale	1
9	Digital Micrometer (0~25mm 11pcs.); (10~25mm-1pc); (25~50mm 4pcs.); (50~75mm 1pcs.)	17
10	Digital Outside Micrometer (PT-EDGE) (0~25mm)	1
11	Inside Micrometer (0~30mm)	2
12	Digital Blade MM (0~25mm)	1
13	Dial Caliper (0~300mm)	1
14	Dial Height Gauge (0~300mm)	3
15	Digimatic Caliper (0~150mm 5pcs.); (0~300mm 1pc.)	6
16	Digital Caliper (0~450mm)	1
17	Digital Height Gauge (0~50mm 2pcs.); (0~350mm 1pc.); (0~450mm 1pc.)	4
18	Dial Gage (.001~10mm)	1
19	Radius Gauge	3 sets
20	Gauge Block Set	2 sets
21	Ceramic Gauge Block Set	1 sets
22	Module For Master Gear M=1 (1pc.); 0.4 (2pcs.); 0.5 (1pc.); 0.6 (1pc.); 0.8 (1pc.)	6
23	Pin Gauge (0.01 Tolerance (21 sets); 0.025 Tolerance (3 sets))	24 sets
24	Lux Meter	1
25	Feeler Gauge	2
26	Image Dimension Measuring System	1
<b>TOTAL QUANTITY</b>		<b>89</b>

### B. INJECTION MOLDING MACHINE LIST

MAKER	INJECTION MOLDING MACHINE	CLAMPING PRESSURE (ton)	MACHINE SHOT CAPACITY	INJECTION PRESSURE (kg f/cm <sup>2</sup> )	QTY
NISSEI	PS40E5A	40	49	2070	4
NISSEI	PS60E9A	60	90	1905	5
NISSEI	PS60E9A	60	69	2485	2
NISSEI	FN1000-18A	80	182	1840	1
NISSEI	FN1000-18A	80	147	2305	3
NISSEI	FN2000-25A	110	254	1770	2
NISSEI	FN4000-50A	180	505	1610	1
NISSEI	FN5000	220	505	1610	1
NISSEI	NEX180T-25E	180	201	1344	1
JSW	J35EL-III 30H	35	30	1700	1
JSW	J35AD-30H	35	30	2270	6
JSW	J55EL-III 60H	55	49	2000	2
JSW	J55AD-60H	55	62	2190	13
JSW	J55AD-30H	55	39	1750	1
JSW	J85AD-110H	85	115	2290	3
JSW	J110EL-III 180H	110	135	1920	1
JSW	J110AD-180H	110	176	2020	5
JSW	J110AD-180H	110	135	2650	2
JSW	J110AD-110H	110	97	2750	2
JSW	J110AD-110H	110	97	2753	2
JSW	J140AD-180H	140	176	2020	4
JSW	J180EL-III 300H	180	226	2200	2
JSW	J180AD-180H	180	176	2020	2
JSW	J220E II-P	220	463	1820	1
JSW	J220EL-III 460H	220	463	1800	2
JSW	J220AD-460H	220	463	1800	1
JSW	J280AD-460H	280	463	1800	5
JSW	J350E II-SP	350	890	1820	1
JSW	J350AD-460H	350	463	1800	1
Multiplus Vertical	V3-2R-85t-5	85	113	2331	1
Victor Taichung	VR450PES	450	1343	2019	1
<b>TOTAL QUANTITY</b>					<b>79</b>

### C. PRODUCTION EQUIPMENT

No.	Description	QTY
1	Nylon Blasting Bead Shot Machine (DS3-18)	1
2	Screen Printing Machine (Winon)	4
3	Tampo Printing Machine (Winon)	5
4	Drying Machine (Winon)	1
<b>TOTAL QUANTITY</b>		<b>11</b>



### D. MOLD & DIE FABRICATION

NO.	DESCRIPTION	QTY
1	Machining Center (MAKINO V33 [1], MAKINO V22 [1])	2
2	Wire Cut Machine (MITSUBISHI [1], SODICK [2])	3
3	Electric Discharge Machine (MITSUBISHI [1], SODICK [1])	2
4	Lathe Machine (HOWA STRONG 860)	1
5	Mold Cleaning Machine (ULTRASONIC MACHINE)	2
6	Standard Drilling Machine	1
7	Welding Machine (ARGON WELDING MACHINE (1), ARGON TIG WELDING MACHINE (1))	2
8	Cutting Machine (EJECTOR PIN CUTTER MACHINE)	1
9	Bench Lathe Machine	1
10	Forming Grinding Machine (OKAMOTO)	2
11	Robo Drill Machine (FANUC)	1
12	NC MILLING (SHIZUOKA)	1
13	Design Software Solid Works (2D and 3D)	3
14	Mold Flow Analysis	1
15	Digital Height Gauge 350 (Mitutoyo)	1
16	Cylindrical Grinder (OKAMOTO [1])	1
17	Surface Grinder (OKAMOTO [1])	1
<b>TOTAL QUANTITY</b>		<b>26</b>

### E. EASY CLAMP FABRICATION

NO.	DESCRIPTION	QTY
1	Milling Machine (OKUMA & HOWA, MILLSTAR)	2
2	Barrel Grinding Machine	1
3	Drill Pointer	1
4	Drilling Machine ( YOSHIDA [1], KIRA [2])	3
5	Press Machine (KING SHANG YUAN, JAM)	2
6	Cutting Machine (EVERISING S-250HA)	1
<b>TOTAL QUANTITY</b>		<b>10</b>

**CUSTOMER**

Aruze Philippines Manufacturing, Inc.
BIGMATE Philippines Inc.
CANON Business Machines Philippines Inc.
DIUP, Inc.
EPSON Precision (Philippines), Inc.
FUJITSU DIE-TECH CORPORATION OF THE PHILIPPINES
HITACHI Cable Phils. Inc.
HITACHI Terminal Mechatronics Phils.
HKT Philippines Inc.
INSUNG Phils. Electronics, Inc.
Intergrated Micro-Electronics Inc.
K&K Molding Inc.
Littelfuse Phils. Inc.
NEC TOKIN Electronics Philippines Inc.
NICERA Phils., Inc.
On Semi Conductor SSMP Philippines Inc.
PANASONIC Precision Devices Philippines Corp.
PHILINAK Industries Inc.
Philippine Auto Components Inc. (DENSO)
Philippines TRC Inc.
SANSEN Philippines Inc.
SANYO DENKI Phils., Inc.
SHARP Phils. Corp.
SHINSEI Industries Philippines, Inc.
SIIX Logistics Philippines, Inc.
SOHBI Kohgei (Phils.), Inc.
TaiHan Precision Technology (Phils.) Co., Inc.
Tokai Rika Group (TRP., Inc.)
TOSHIBA Consumer Products (Thailand) Co. Ltd.
Vacuumtech Philippines Inc. (Thermos)

## OUR CUSTOMER MAIN PRODUCTS



**EPSON**  
EXCEED YOUR VISION

**FUJITSU**

Creating new value and promoting the development of new technology for the future generations.

**Canon**  
Delighting You Always

**ARUZE GAMING**  
AMERICA

LINK CRAPS™

**DENSO** **DENSO**

**HITACHI**  
Inspire the Next

**THERMOS**  
QUALITY SINCE 1904