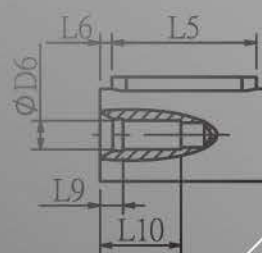
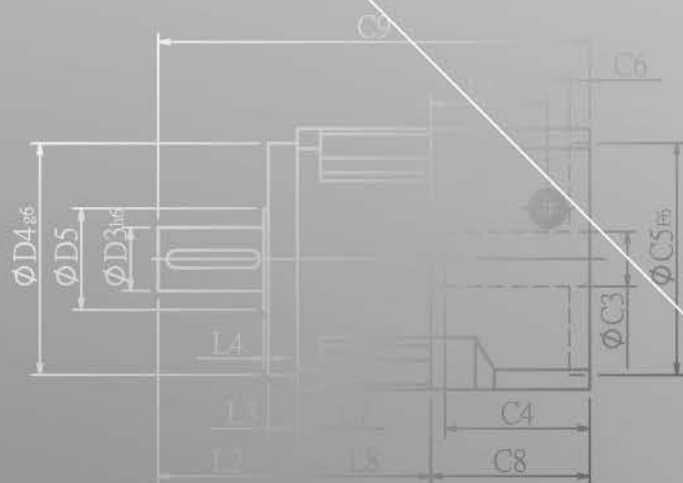
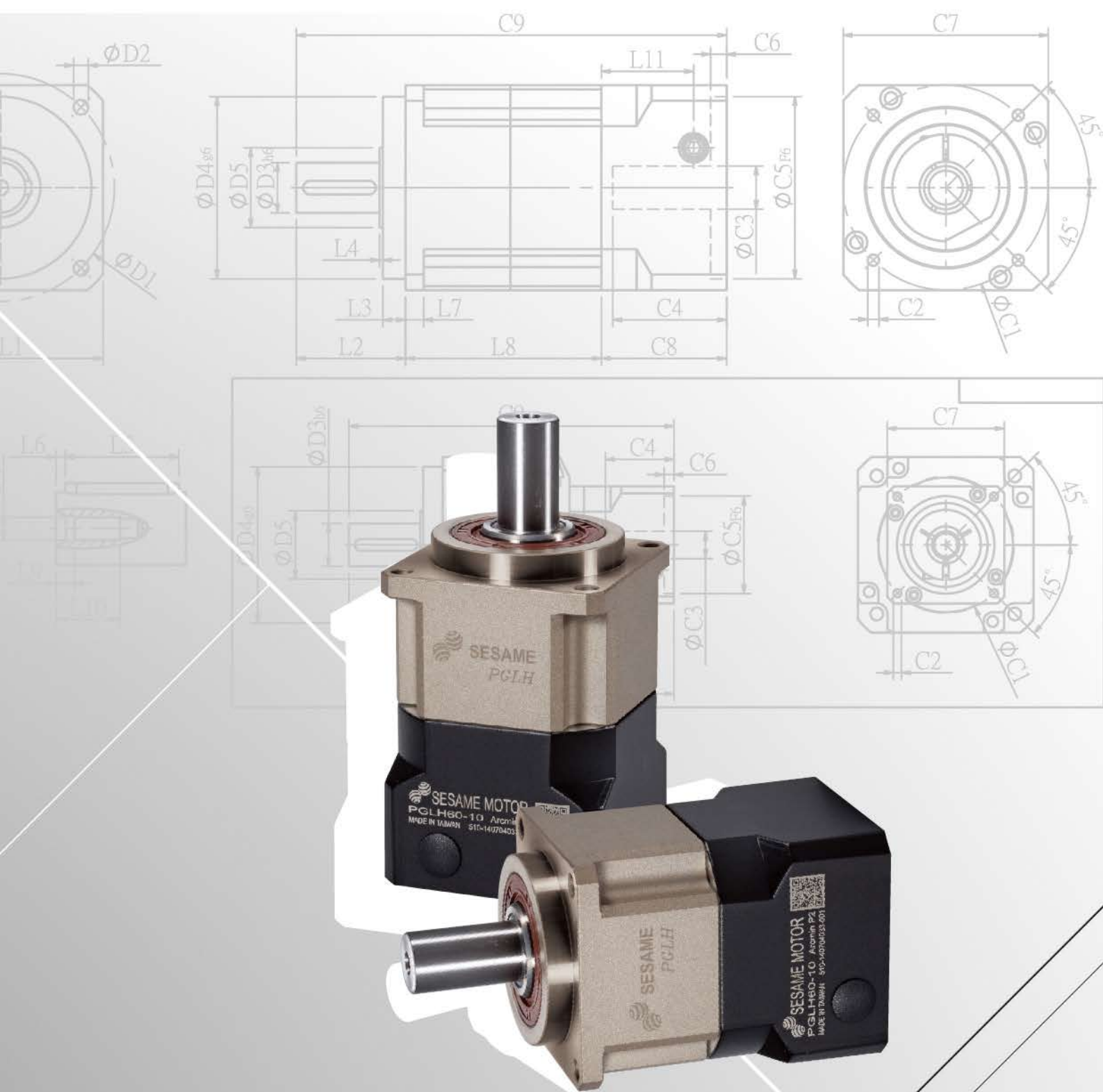
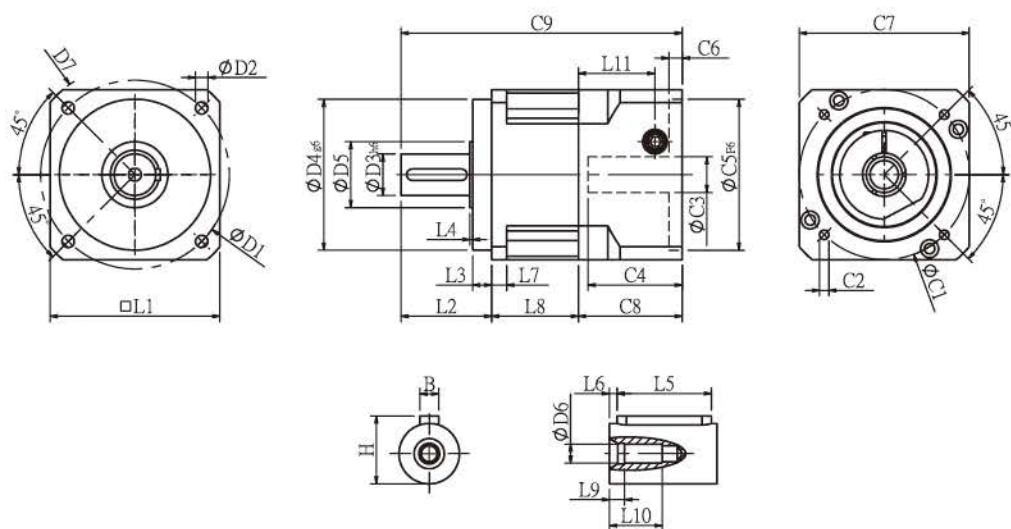


PGLH SERIES





PGLH Single Stage Dimensions PGLH單段外型尺寸圖



Specifications 規格

Unit:mm

尺寸 Dimensions	PGLH42	PGLH60	PGLH90	PGLH115
D1	50	70	100	130
D2	3.4	5.5	6.5	8.5
D3 _{h6}	13	16	22	32
D4 _{g6}	35	50	80	110
D5	15	25	35	45
D6	M4x0.7P	M5x0.8P	M8x1.25P	M12x1.75P
D7	56	80	118	148
L1	42.6	60	90	115
L2	26	37	48	63
L3	5.5	7	10	10
L4	1	1.5	1.5	3.5
L5	15	25	32	40
L6	2	2	3	5
L7	4	6	8	11
L8	28.3	37	46	57
L9	4	4	4.5	6
L10	14	16.5	20.5	30
L11	29	35.5	40.5	53.7
C1 ²	46	70	90	115
C2 ²	M4x0.7P	M5x0.8P	M6x1.0P	M8x1.25P
C3 ²	≤8/≤14	≤14/≤19	≤19/≤24	≤24/≤32/≤38
C4 ²	27	37	41	56.3
C5 ² _{F6}	30	50	70	95
C6 ²	4	4	6	10
C7 ²	42.6	60	90	115
C8 ²	38.5	46	55	75
C9 ²	92.8	120	149	195
B	5	5	6	10
H	15	18	24.5	35

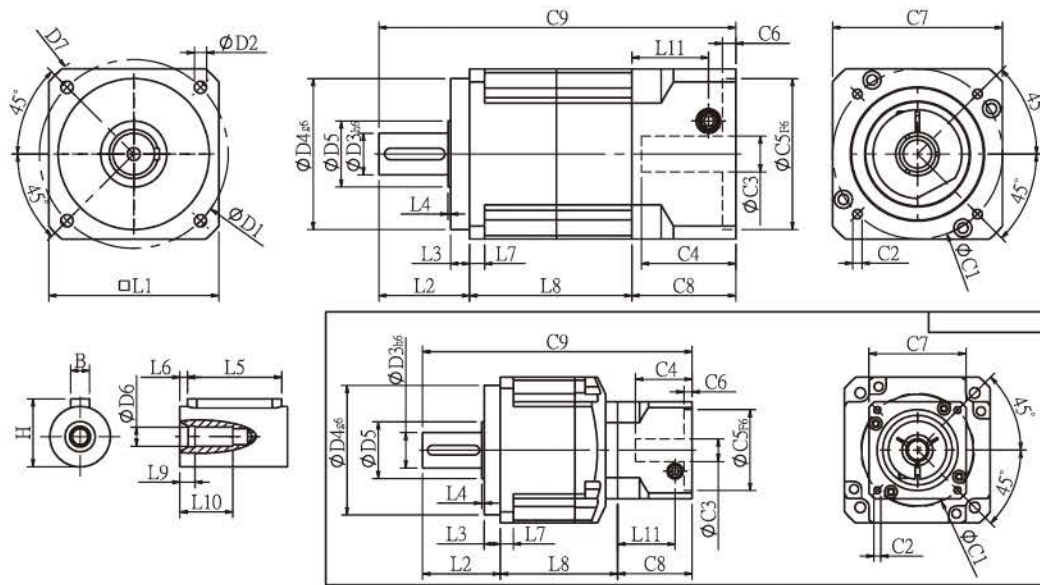
★ C1~C9是公製標準馬達連接板尺寸,請依所選用的馬達決定。

★ 本公司有權針對以上數據規格進行設計變更不先行告知。

★ C1~C9 are motor specific dimensions(metric std shown), Size may vary according to motor flange.

★ Specification subject to change without notice.

PGLH Double Stage Dimensions PGLH雙段外型尺寸圖



Specifications 規格

Unit:mm

尺寸 Dimensions	PGLH42	PGLH60	PGLH60T	PGLH90	PGLH90T	PGLH115
D1	50	70		100		130
D2	3.4	5.5		6.5		8.5
D3 h6	13	16		22		32
D4 g6	35	50		80		110
D5	15	25		35		45
D6	M4x0.7P	M5x0.8P		M8x1.25P		M12x1.75P
D7	56	80		118		148
L1	42.6	60		90		115
L2	26	37		48		63
L3	5.5	7		10		10
L4	1	1.5		1.5		3.5
L5	15	25		32		40
L6	2	2		3		5
L7	4	6		8		11
L8	55.3	70	65.5	90	78.5	99.5
L9	4	4		4.5		6
L10	14	16.5		20.5		30
L11	29	35.5	29	40.5	35.5	40.7
C1 ²	46	70	46	90	70	90
C2 ²	M4x0.7P	M5x0.8P	M4x0.7P	M6x1.0P	M5x0.8P	M6x1.0P
C3 ²	≤8/≤14	≤14/≤19	≤8/≤14	≤19/≤24	≤14/≤19	≤19/≤24
C4 ²	27	37	27	41	37	46
C5 ² F6	30	50	30	70	50	70
C6 ²	4	4	4	6	4	10
C7 ²	42.6	60	42.6	90	60	90
C8 ²	38.5	46	38.5	55	46	60
C9 ²	119.8	153	141	193	172.5	222.5
B	5	5		6		10
H	15	18		24.5		35

★ C1~C9是公製標準馬達連接板尺寸,請依所選用的馬達決定。

★ 本公司有權針對以上數據規格進行設計變更不先行告知。

★ C1~C9 are motor specific dimensions(metric std shown), Size may vary according to motor flange.

★ Specification subject to change without notice.

PGLH Specifications Table PGLH性能規格共表

規格 Specifications		節數 Stage	減速比 Ratio	PGLH-42	PGLH-60	PGLH-90	PGLH-115
額定輸出力矩 T _{2N} Nominal Output Torque	N • m	1	3	19	53	145	290
			4	20	55	150	300
			5	17	54	140	290
			7	14	44	125	270
			10	11	37	95	220
		節數 Stage	減速比 Ratio	PGLH-42	PGLH-60(T)	PGLH-90(T)	PGLH-115T
		2	15	19	53	145	290
			20	20	55	150	300
			25	17	54	140	290
			30	17	54	140	290
			35	17	54	140	290
			40	17	54	140	290
			50	17	54	140	290
			70	14	44	125	270
			100	11	37	95	220
急停力矩 T _{2NOT} Emergency Stop Torque	N • m		3.0 倍額定輸出力矩 (3.0 times of Nominal Output Torque) (* 最大輸出力矩 Max. Output Torque T _{2B} =60% of Emergency Stop Torque)				
額定輸入轉速 n _{1N} Nominal Input Speed	rpm	1,2	3-100	4000	4000	3000	3000
最大輸入轉速 n _{1max} Max. Input Speed	rpm	1,2	3-100	8000	8000	6000	6000
精密背隙 Precision Backlash P1	arcmin	1	3-10	≤ 6	≤ 6	≤ 6	≤ 5
		2	12-100	≤ 8	≤ 8	≤ 8	≤ 7
標準背隙 Standard Backlash P2	arcmin	1	3-10	≤ 8	≤ 8	≤ 8	≤ 7
		2	12-100	≤ 10	≤ 10	≤ 10	≤ 9
扭轉剛性Torsional Rigidity	N • m /arcmin	1,2	3-100	2.5	6	12	23
容許徑向力 F _{2re} ¹ Max. Radial Load	N	1,2	3-100	640	1260	2230	4300
容許軸向力 F _{2aB} ¹ Max. Axial Load	N	1,2	3-100	410	600	1500	3310
使用溫度 Operating Temp.	°C		3-100	-10 °C ~ +90 °C			
使用壽命Service Life	hr		3-100	20,000 (10,000/ 連續運轉 Continuous operation)			
效率 Efficiency	%	1	3-10	≥ 97%			
		2	12-100	≥ 94%			
重量 Weight	kg	1	3-10	0.6	1.3	3.5	7.8
		2	12-100	0.9	2.0/1.56	5.6/3.9	9.5
安裝方向 Mounting Position	-	1,2	3-100	任意方向Any direction			
噪音值 Noise Level ²	dB(A)/1m	1,2	3-100	58	60	63	65
防護等級 Protection Class	-	1,2	3-100	IP65			
潤滑 Lubrication	-	1,2	3-100	全合成潤滑油 Synthetic Lubricant			
減速機轉動慣量 Inertia(J1)							
節數Stage	減速比Ratio	單位unit		PGLH-42	PGLH-60	PGLH-90	PGLH-115
1	3	Kg • cm ²		0.03	0.23	0.97	2.35
	4			0.02	0.18	0.67	1.66
	5			0.02	0.17	0.65	1.50
	7			0.02	0.14	0.60	1.45
	10			0.02	0.14	0.58	1.41
節數Stage	減速比Ratio			PGLH-42	PGLH-60(T)	PGLH-90(T)	PGLH-115T
2	15/20/25			0.02	0.17(0.02)	0.65(0.17)	0.65
	30/35/40			0.02	0.14(0.02)	0.60(0.14)	0.60
	50/70/100			0.02	0.14(0.02)	0.58(0.14)	0.58

* 1. 輸出轉速 100rpm 時,作用於輸出軸中心位置 Applied to the output shaft center @100rpm.

* 2. 3000rpm 空載重測 Measured at 3000rpm with no load

※本公司有權對以上數據規格逕行設計變更不先行告知 • The above figures/specifications are subject to change without prior notice.

Products due to human error, natural disasters or other factors lead to poor or damaged, will not be covered under warranty.
產品因人為原因或天災等因素導致不良或損壞，不在保固範圍內。

SERVO MOTOR GEARHEADS



PHL
PHFR
PHF
PGH
PUR
PIL
PGLH
PGL
PGC
PGE
PGRH
PGR
PGRH
PGF
PBC
PBE
PAE
PAC
PAN
PGS
PNS