

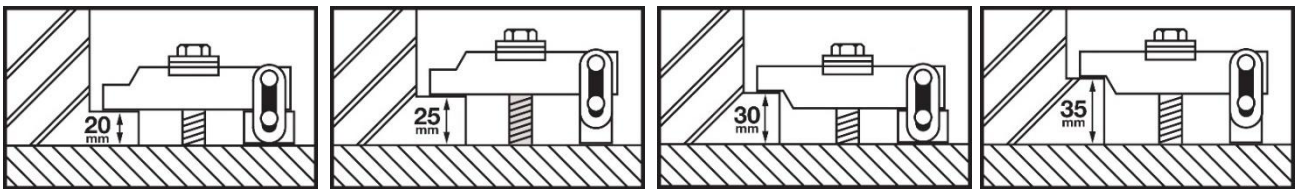


EASYCLAMP

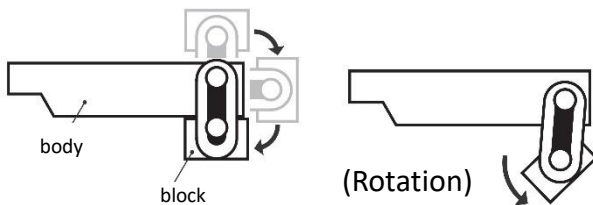
Mold Clamp

1 type can fit 4 mold base heights

Quick, Easy, yet Reliable mold replacement



■ One Touch Quick Change

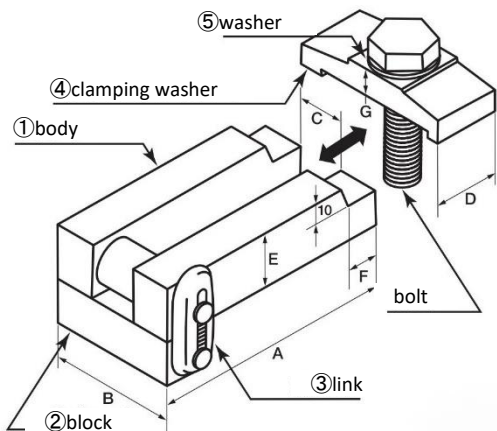


■ Applications

- Injection Molding
- Press Forming
- Diecasting

By rotating a block or a body, one type of EASYCLAMP can clamp 4 different heights of mold base



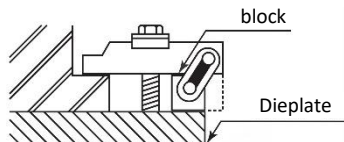


〈Easy, Quick, and Flexible〉

● Quick detachment of ①body, by loosening the bolt a bit, thanks to its unique shape.

● Easy attachment of ①body, because ④clamping washer always keeps its direction vertical.

● Flexible clamp position. Thanks to its unique structure, ②block can be shifted easily.



〈Specifications〉

Model	SS	S	M	MA	MB	L	L Special	LA	LA Special	EL	EL Special
Size(mm)											
A	80	80	100	120	150	150	150	150	150	200	200
B	28.5	30.5	46.5	46.5	46.5	61	65	61	65	69	69
C	10.5	12.5	16.5	16.5	16.5	21	25	21	25	25	25
D	20	22	30	30	30	39	44	39	44	44	44
E	25	25	25	25	25	30	30	30	30	32	32
F	15	15	15	15	15	15	15	15	15	15	15
G	6	6	10.5	10.5	10.5	13	16	13	16	16	16
Block Height	10 x 15	20 x 25	20 x 25	20 x 25	20 x 25	30 x 35	30 x 35	40 x 45	40 x 45	30 x 35	40 x 45
Thickness of Washer	2	2.5	3	3	3	3	4	3	4	4	4
Thickness of Clamped Mold	10 15	20 25	20 25	20 25	20 25	30 35	30 35	40 45	40 45	30 35	40 45
	20 25	30 35	30 35	30 35	30 35	40 45	40 45	50 55	50 55	40 45	50 55
Bolt Size (※Optional)	M10 x 70	M12 x 80	M16 x 90	M16 x 90	M16 x 90	M20 x 120	M24 x 120	M20 x 130	M24 x 130	M24 x 120	M24 x 130
Packaged in 1 set	8pcs.	8pcs.	8pcs.	8pcs.	8pcs.	8pcs.	8pcs.	8pcs.	8pcs.	8pcs.	8pcs.
Weight of 1 set (kg)	3.4	4	7.6	8.6	10	18	19.6	20	22.8	26.5	29.8
Weight of 8pcs. of Bolts (kg)	0.5	0.7	1.4	1.4	1.4	2.8	4.1	3	4.4	4.1	4.4

Trouble-free Mold Replacement

● Harmless to a Dieplate and a bolt hole, thanks to larger foot print of ②block than other clamp.

● Missing free structure. ①body and ②block are linked with ③links and springs.

● Safe to a bolt hole. Different from other types of clamp, The bolt is fixed fully vertical. This can avoid unwanted force to a bolt hole.

Matex Co.,Ltd.

Head Office(Osaka, Japan)

1-125, Mizukoshi, Yao city, Osaka, 581-0856

Tel:+81-72-941-8652 Fax:+81-72-941-8820

E-mail:info@matex-japan.com

Tokyo Branch

Kiuch Building 3F, 3-2-2, Iwamoto-Cho, Chiyoda-ku, Tokyo, 101-0032

Tel:+81-3-5825-1535 Fax:+81-3-5825-1536

E-mail:info@matex-japan.com

Matex Planetary Drive International, Inc.

E-mail:info@matex.com.ph

Wuxi Matex Precision Co.,Ltd.

E-mail:info@wx-matex.com