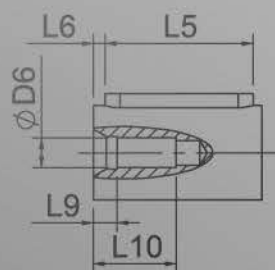
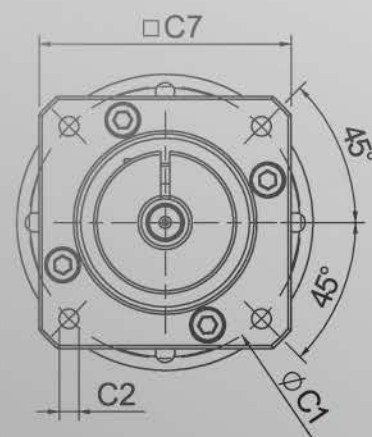
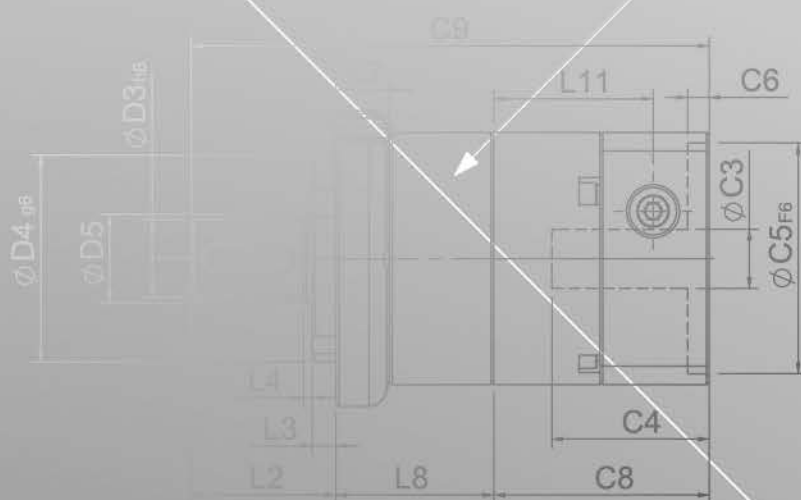
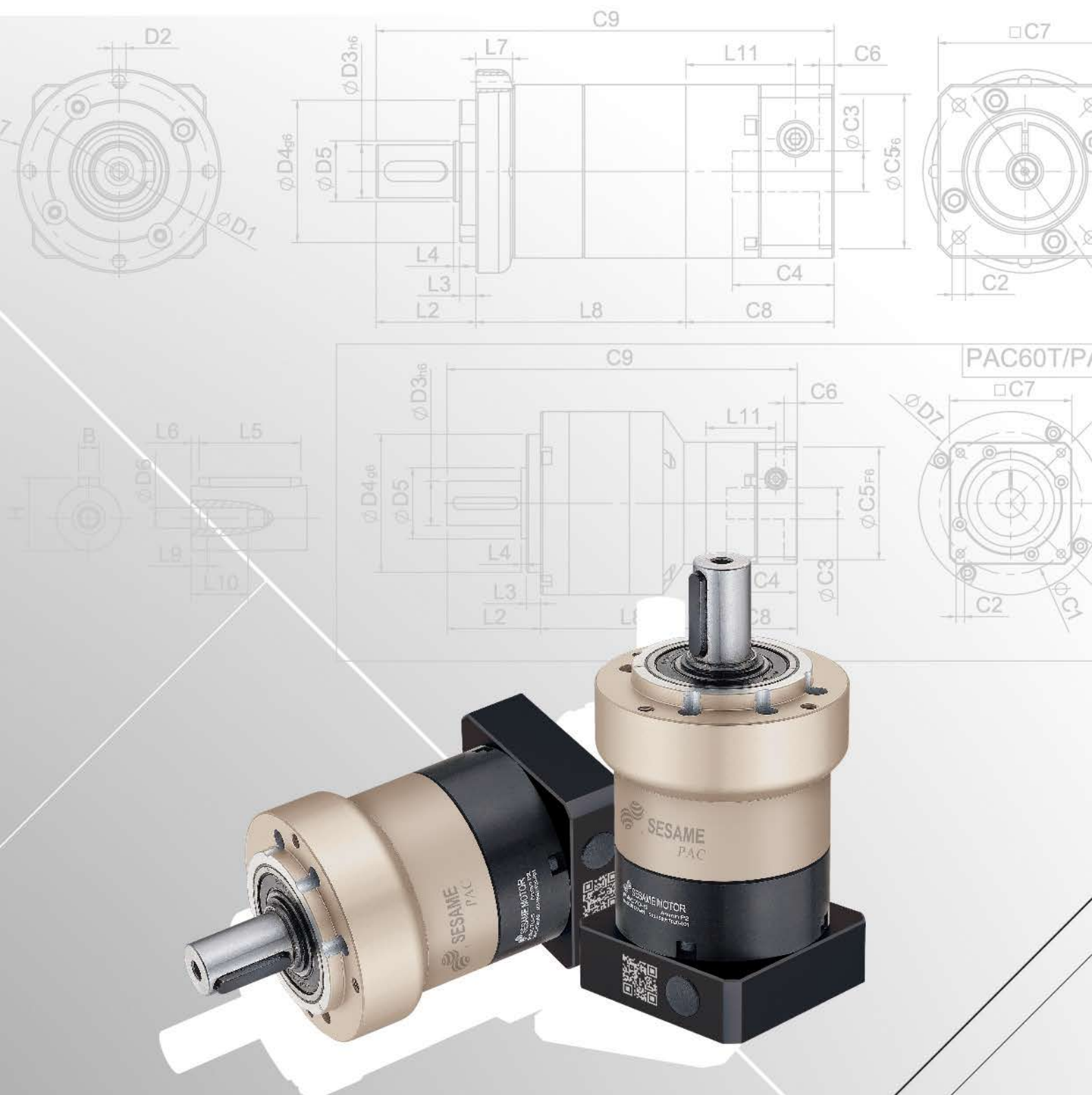
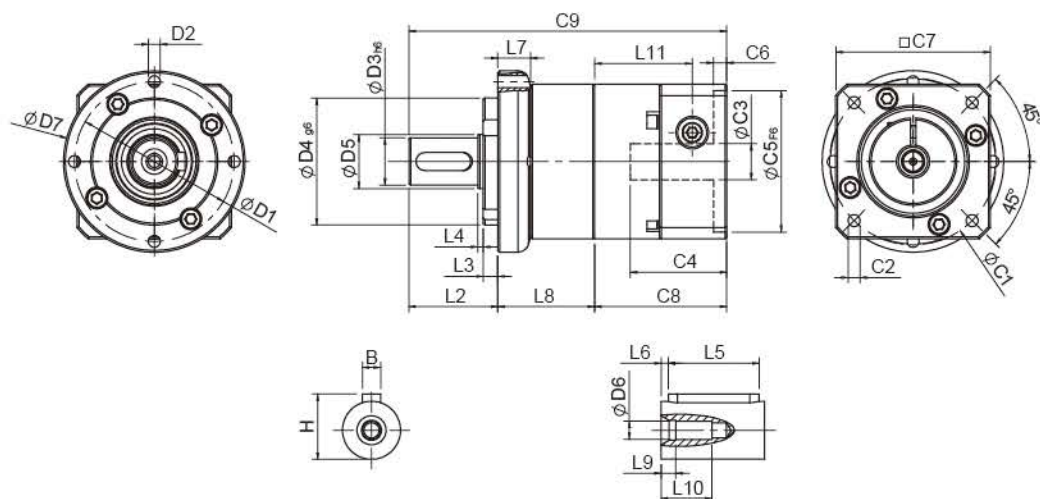


PAC ***SERIES***





PAC單段外型尺寸圖 PAC Single Stage Dimensions



Specifications 規格

Unit:mm

尺寸 Dimensions	PAC50	PAC70	PAC90	PAC115
D1	44	62	80	
D2	M4x0.7P	M5x0.8P	M6x1.0P	
D3 _{h6}	12	16	22	
D4 _{g6}	35	52	68	
D5	15	20	35	
D6	M4x0.7P	M5x0.8P	M8x1.25P	
D7	50	70	90	
L2	24.5	36	46	
L3	4	6	7	
L4	1.5	1.5	2.5	
L5	15	25	32	
L6	2	2	3	
L7	9	13.3	14	
L8	26.7	37.3	43.8	
L9	4	4	4.5	
L10	14	16.5	20.5	
L11	26.9	34.3	41.5	
C1 ²	46	70	90	
C2 ²	M4x0.7P	M5x0.8P	M6x1.0P	
C3 ²	≤8/≤11	≤14/≤19	≤19/≤24/≤28	
C4 ²	26.5	33.5	41	
C5 ² _{F6}	30	50	70	
C6 ²	4	4	6	
C7 ²	42.6	60	90	
C8 ²	36.4	44.8	55.8	
C9 ²	87.6	118.1	145.6	
B	4	5	6	
H	13.5	18	24.5	

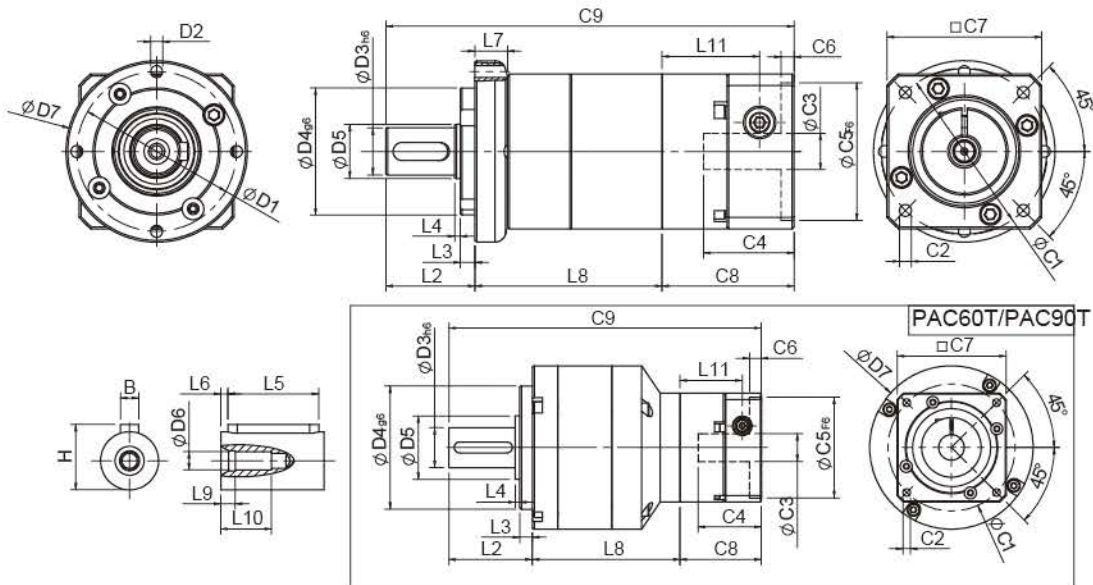
★ C1~C9是公製標準馬達連接板尺寸,請依所選用的馬達決定。

★ 本公司有權針對以上數據規格逕行設計變更不先行告知。

★ C1~C9 are motor specific dimensions(metric std shown), Size may vary according to motor flange.

★ Specification subject to change without notice.

PAC雙段外型尺寸圖 PAC Double Stage Dimensions



Specifications 規格

Unit:mm

尺寸 Dimensions	PAC50	PAC70	PAC70T	PAC90	PAC90T	PAC115T
D1	44	62		80		
D2	M4x0.7P	M5x0.8P		M6x1.0P		
D3 _{h6}	12	16		22		
D4 _{g6}	35	52		68		
D5	15	20		35		
D6	M4x0.7P	M5x0.8P		M8x1.25P		
D7	50	70		90		
L2	24.5	36		46		
L3	4	6		7		
L4	1.5	1.5		2.5		
L5	15	25		32		
L6	2	2		3		
L7	9	13.3		14		
L8	51.6	68	63.6	84.8	81.4	
L9	4	4		4.5		
L10	14	16.5		20.5		
L11	26.9	34.3	26.9	41.5	34.3	
C1 ²	46	70	46	90	70	
C2 ²	M4x0.7P	M5x0.8P	M4x0.7P	M6x1.0P	M5x0.8P	
C3 ²	≤8/≤11	≤14/≤19	≤8/≤11	≤19/≤24/≤28	≤14/≤19	
C4 ²	26.5	33.5	26.5	41	33.5	
C5 ² _{F6}	30	50	30	70	50	
C6 ²	4	4	4	6	4	
C7 ²	42.6	60	42.6	90	60	
C8 ²	36.4	44.8	36.4	55.8	44.8	
C9 ²	112.5	148.8	136	186.6	172.2	
B	4	5		6		
H	13.5	18		24.5		

★ C1~C9是公製標準馬達連接板尺寸,請依所選用的馬達決定。

★ 本公司有權針對以上數據規格進行設計變更不先行告知。

★ C1~C9 are motor specific dimensions(metric std shown), Size may vary according to motor flange.

★ Specification subject to change without notice.

PAC Specifications Table PAC性能規格共表

規格 Specifications		節數 Stage	減速比 Ratio	PAC-50	PAC-70	PAC-90	PAC-120
額定輸出力矩 T _{2N} Nominal Output Torque	N • m	1	3	9	28	85	250
			4	10	32	80	240
			5	11	35	95	270
			7	10	28	85	220
			9	8	23	75	210
			10	8	21	65	190
		節數 Stage	減速比 Ratio	PAC-50	PAC-60 / PAC-60T	PAC-90 / PAC-90T	PAC-120T
		2	15	11	34	90	250
			20	10	32	80	240
			25	11	35	95	270
			35	11	35	95	270
			45	11	35	95	270
			49	10	28	85	220
			63	10	28	85	220
			81	8	23	75	210
		100	8	21	65	190	
急停力矩 T _{2NOT} Emergency Stop Torque	N • m		3.0 倍額定輸出力矩 (3.0 times of Nominal Output Torque) (* 最大輸出力矩 Max. Output Torque T _{2B} =60% of Emergency Stop Torque)				
額定輸入轉速 n _{1N} Nominal Input Speed	rpm	1,2	3-81	4000	4000	3000	2500
最大輸入轉速 n _{1max} Max. Input Speed	rpm	1,2	3-81	8000	6000	6000	5000
標準背隙 Standard Backlash P2	arcmin	1 2	3-9 15-81	≤ 9 ≤ 12	≤ 8 ≤ 10	≤ 7 ≤ 9	≤ 6 ≤ 8
扭轉剛性Torsional Rigidity	N • m /arcmin	1,2	3-81	1.5	4	8.5	17
容許徑向力 F _{2re} ¹ Max. Radial Load	N	1,2	3-81	760	1250	2030	4200
容許軸向力 F _{2aB} ¹ Max. Axial Load	N	1,2	3-81	410	700	1200	2600
使用溫度 Operating Temp.	°C		3-81	-10 °C ~ +90 °C			
使用壽命Service Life	hr		3-81	20,000 (10,000/ 連續運轉 Continuous operation)			
效率 Efficiency	%	1 2	3-9 15-81	≥ 95% ≥ 90%			
重量 Weight	kg	1 2	3-9 15-81	0.6 0.8	1.3 1.8/1.6	3.2 4.8/3.7	7.5 9.2
安裝方向 Mounting Position	-	1,2	3-81	任意方向Any direction			
噪音值 Noise Level ²	dB(A)/1m	1,2	3-81	61	63	66	67
防護等級 Protection Class	-	1,2	3-81	IP65			
潤滑 Lubrication	-	1,2	3-81	全合成潤滑油 Synthetic Lubricant			
減速機轉動慣量 Inertia(J1)							
節數Stage	減速比Ratio	單位unit		PAC-50(ψ8)	PAC-70(ψ14)	PAC-90(ψ19)	PAC-120(ψ24)
1	3	Kg • cm ²		0.04	0.23	0.77	2.30
	4			0.03	0.21	0.67	1.92
	5			0.03	0.21	0.61	1.71
	7			0.03	0.21	0.60	1.65
	9			0.03	0.21	0.60	1.63
	10			0.03	0.21	0.60	1.63
節數Stage	減速比Ratio			PAC-50(ψ8)	PAC-70(ψ14) / PAC-70T(ψ8)	PAC-90(ψ19) / PAC-90T(ψ14)	PAC-120T (ψ19)
2	15/20/25			0.03	0.21(0.03)	0.61(0.21)	0.61
	35/49			0.03	0.21(0.03)	0.60(0.21)	0.60
	45/63/81/100			0.03	0.21(0.03)	0.60(0.21)	0.60

* 1. 輸出轉速 100rpm 時,作用於輸出軸中心位置 Applied to the output shaft center @100rpm.

* 2. 3000rpm 空載重測 Measured at 3000rpm with no load

※本公司有權對以上數據規格進行設計變更不先行告知。 The above figures/specifications are subject to change without prior notice.

Products due to human error, natural disasters or other factors lead to poor or damaged, will not be covered under warranty.

產品因人為原因或天災等因素導致不良或損壞,不在保固範圍內。

SERVO MOTOR GEARHEADS



PHL PHFR PHF PGH PUR PIL PGLH PGL PGC PGE PGRH PGR PGFR PGF PBC PBE PAE PAC PAN PGS PNS